



Microcement



■ Microcement

Fields of application



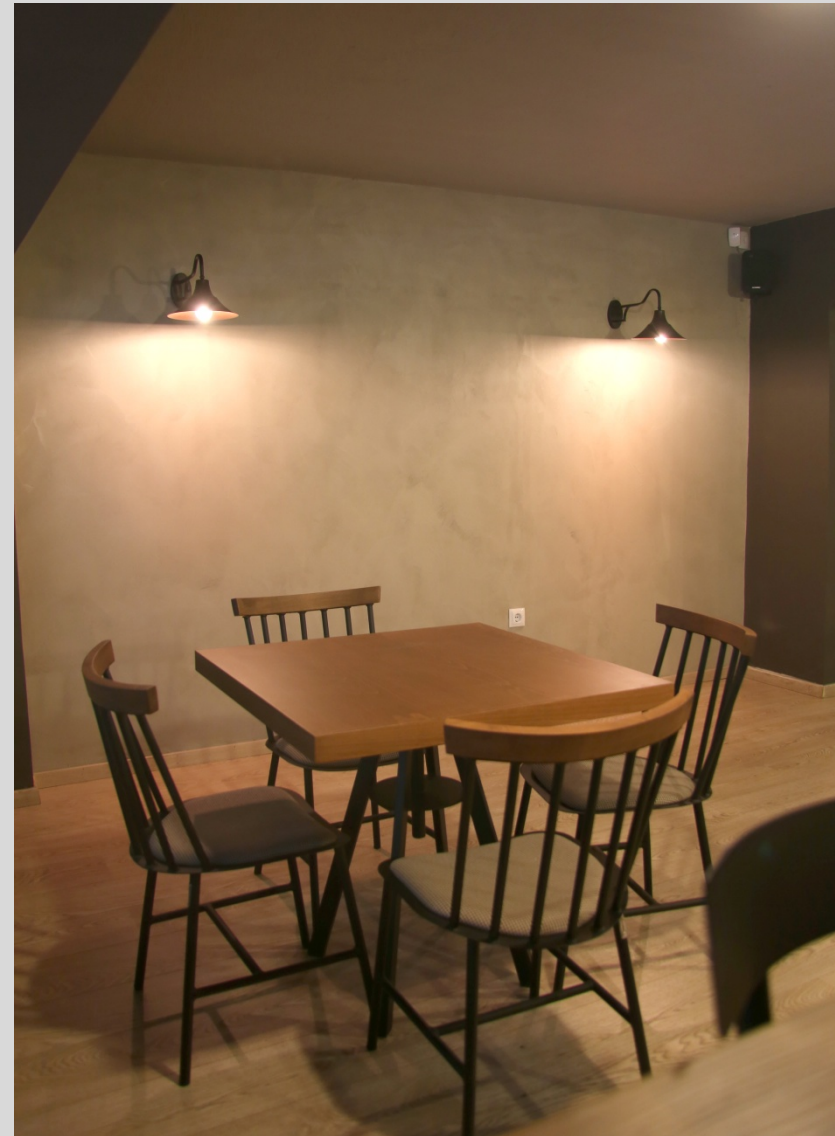
Microcement = Polymer-modified, cementitious mortar for a monolithic, uniquely aesthetic appearance

- Suitable for interior and exterior use on floors, walls, stairs, etc.
- Ideal for special constructions (e.g. built-in beds, fireplaces, washbasins, showers).
- Used in houses, stores, hotels, entertainment venues, etc.



■ Microcement

Fields of application



■ **Microcement**
Substrate preparation





SUBSTRATE PREPARATION

Check the substrate for:

- Durability
- Adhesion
- Flatness
- Absorptivity
- Cleanliness

Floors

- **DUROCRET** – Polymer-modified, repairing cement mortar
- **RAPICRET** – Fast-setting, repairing cement mortar

Walls

- **MARMOCRET-1** – Pre-mixed, one-layer plaster
- **UNICRET-FAST** – Fast-setting, white, repairing mortar

DUROCRET

Polymer-modified, repairing cement mortar

FIELDS OF APPLICATION:

- Concrete, masonry & plaster repairs
- Construction of roof ridgepoles, formation of fillets, etc.
- In case of large-scale applications, apply in layers up to 2 cm thick - in case of local repairs, apply in layers up to 5 cm thick

PROPERTIES:

- Work simplification
- Abrasion resistance
- Water impermeability
- Very good bonding to the substrate

CONSUMPTION: ~15 kg/m²/cm

PACKAGING: 25 kg, 5 kg

COLORS: Grey, white, redbrown



RAPICRET

Fast-setting, repairing cement mortar

FIELDS OF APPLICATION :

- Used for quick repairs of concrete elements, fixing, anchoring, patching of cavities or holes, forming fillets, etc.
- Also suitable in case high durability and fast application are required

PROPERTIES:

- Excellent workability
- Reduced water permeability
- Very good adhesion to the substrate

CONSUMPTION: ~17.5 kg/m²/cm

PACKAGING: 25 kg, 5 kg

COLOR: Grey

PCC R3 according to EN 1504-3



MARMOCRET-1

Pre-mixed, one-layer plaster

FIELDS OF APPLICATION:

- Used for construction and repair of coatings
- Suitable for interior and exterior use

PROPERTIES:

- Replaces the last two plaster layers (main and finishing coat)
- Shows excellent adhesion and workability
- Simplifies and enables the procedure
- Ideal for application with a plastering machine, too
- Standard quality
- Perfect breathability of the building element

CONSUMPTION: ~15 kg/m²/cm

PACKAGING: 30 kg

COLORS: Grey, white



UNICRET-FAST

Fast-setting, white, repairing mortar

FIELDS OF APPLICATION :

- Quick repair of plaster

PROPERTIES:

- Standard quality
- Simplified procedure
- Faster results
- Very good workability
- High adhesion to the substrate

CONSUMPTION: ~14.7 kg/m²/cm

PACKAGING: 25 kg και 5 kg

COLOR: White





WATERPROOFING

- **AQUAMAT-FLEX** – Two-component, flexible, brushable sealing slurry
- **AQUAMAT-ELASTIC** - Two-component, elastic, brushable sealing slurry

AQUAMAT-FLEX

Two-component, flexible, brushable sealing slurry

FIELDS OF APPLICATION :

- Used for waterproofing surfaces made of concrete, plaster, bricks, cement-blocks, mosaic, etc.
- Ideal for application on flat roofs, balconies and damp areas that are going to be covered with tiles (bathrooms, kitchens)

PROPERTIES:

- Total waterproofing without seams or joints
- Bonding to wet surfaces without prior priming
- Suitability for potable water tanks, as well as food contact surfaces, according to W-347

CONSUMPTION: 2-4 kg/m²

PACKAGING: 33 kg and 18 kg

COLOR: Grey



AQUAMAT-ELASTIC

Two-component, elastic, brushable sealing slurry

FIELDS OF APPLICATION :

- Used for waterproofing surfaces made of concrete, plaster, bricks, cement-blocks, mosaic, gypsum board, wood, metal, etc.
- Ideal for waterproofing surfaces, both internally and externally, against moisture or water under pressure

PROPERTIES:

- Crack-bridging ability
- Total waterproofing without joints or seams
- Bonding to slightly wet surfaces without prior priming
- Suitability for potable water tanks, as well as food contact surfaces, according to W-347

CONSUMPTION: 2-4 kg/m²

PACKAGING: 35 kg and 7 kg

COLORS: Grey & white





PRIMING THE SUBSTRATE

Absorbent substrates:

- **UNI-PRIMER** – Acrylic, water-based primer
- **FLEX-PRIMER** – Highly penetrative, acrylic, water-based primer

Non-absorbent substrates:

- **ISOMAT SUPERGRUND** – Primer for roughening surfaces

FLEX-PRIMER



High-quality, acrylic, water-based primer

FIELDS OF APPLICATION :

- Used as a ready-to-use , micronized primer for reinforcing adhesion to porous substrates, such as concrete, brickwork, plaster, gypsum boards, chip boards, etc.
- Stabilizes brittle surfaces, such as unsound plasters, etc.

PROPERTIES:

- Penetrates and anchors into the pores of the substrate
- Acts as a connecting layer with the material that is going to be applied

CONSUMPTION: 100-200 g/m²

PACKAGING: 20 kg, 10 kg, 5 kg, and 1 kg

COLOR: White

UNI-PRIMER



Acrylic, water-based primer

FIELDS OF APPLICATION :

- Used as a ready-to-use primer that will ensure adhesion to porous substrates , such as concrete, brickwork, plaster, gypsum boards, chip boards, etc.
- Stabilizes brittle surfaces, such as unsound plasters, etc.

PROPERTIES:

- Penetrates and anchors into the pores of the substrate
- Acts as a connecting layer with the material that is going to be applied

CONSUMPTION: 100-200 g/m²

PACKAGING: 20 kg, 5 kg, 1 kg

COLOR: White

Priming very absorbent substrates (e.g. tufa, aerated concrete)





ISOMAT SUPERGRUND

Adhesion primer for roughening smooth or non-absorbent surfaces

FIELDS OF APPLICATION:

- Roughens the substrate in order to enhance the adhesion of the material that is going to be applied
- Suitable for interior and exterior use

PROPERTIES:

- Odorless, as it is water-based
- Ready-to-use
- Dries quickly (1h at +20°C)
- Shows high coverage

CONSUMPTION: 100-200 g/m²

PACKAGING: 20 kg, 5 kg

COLOR: Red



APPLICATION

Steps:

1. ■ **DUROCRET-DECO** – Colored microcement coating for floors & walls or
 - **DUROCRET-DECO FLEX** – Colored, flexible microcement coating for floors & walls
 - **160 gr/m² Fiberglass mesh**
2. ■ **DUROCRET-DECO FINISH** – Colored, fine-grained microcement coating for floors & walls
 - **ADIFLEX-B** – Elastifying agent
3. ■ **DECO-COLOR** – Pigments in powder form
- 4a. ■ **VARNISH-PU 2K** – Two-component, transparent, polyurethane varnish or
 - **VARNISH-PU 2KW** - Two-component, transparent, water-based, polyurethane varnish
 - **VS-W** – Acrylic, water-based varnish
- 4b. ■ **VARNISH-PU 2K** - Two-component, transparent, polyurethane varnish

DUROCRET-DECO

Colored microcement coating for floors and walls



FIELDS OF APPLICATION:

- Used for new constructions or restoration of existing spaces
- Suitable for interior and exterior use

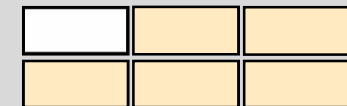
PROPERTIES:

- Flexible, polymer-modified, fiber-reinforced cement mortar, without corrosive components
- Special, timeless appearance
- Excellent resistance to abrasion and cracking
- High water repellency
- Very good bonding to the substrate

CONSUMPTION: ~1.5 kg/m²/mm

PACKAGING: 25 kg, 5 kg

COLORS: White, grey, light grey, light ochre, mocha, crocus



DUROCRET-DECO FLEX

Colored, flexible microcement coating for floors and walls



FIELDS OF APPLICATION:

- Used for new constructions or restoration of existing spaces
- Suitable for exterior and interior use

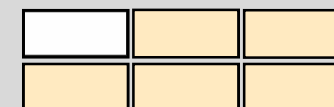
PROPERTIES:

- Flexible, polymer-modified, fiber-reinforced cement mortar, without corrosive components
- Special, timeless appearance
- Excellent resistance to abrasion and cracking
- High water repellency
- Very good bonding to the substrate

CONSUMPTION: ~1.5 kg/m²/mm

PACKAGING: 25 kg, 5 kg

COLORS: White, grey, light grey, light ochre, mocha, crocus



FIBERGLASS MESH

Fiberglass mesh for reinforcing cement mortars

FIELDS OF APPLICATION:

- Used for new constructions or restoration of existing spaces
- Suitable for exterior and interior applications

PROPERTIES:

- Weight: 160g/m²
- Mesh hole size: 4.0 x 4.0 mm
- Roll dimensions: 1m x 50m (50m²)



Application of DUROCRET-DECO



- 25 kg of **DUROCRET-DECO** + 5.5 l of water under stirring, until the mixture obtains the desired workability



- Application with a notched trowel in a thickness of 2-10 mm per layer
- Leveling with the smooth side of the trowel

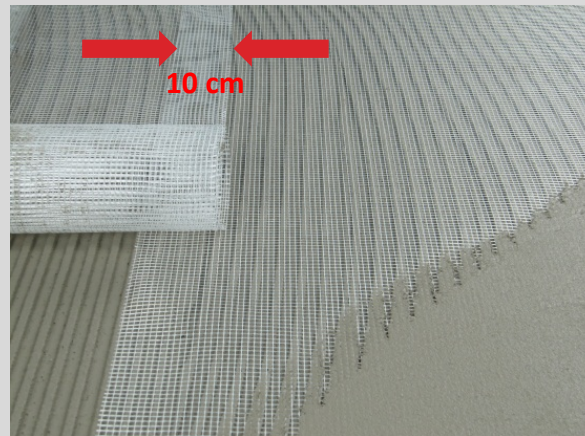


Application of DUROCRET-DECO



The reinforcement fiberglass mesh is placed on the “combed” surface and then embedded with the smooth side of the trowel:

- In layers thicker than 3 mm
- On substrates subject to vibration
- On cracked substrates



DUROCRET-DECO FINISH



Colored, fine-grained microcement coating for floors and walls

FIELDS OF APPLICATION:

- Applied in thin layers (1-3 mm), as an exposed microcement coating on cementitious substrates
- Suitable for interior and exterior use

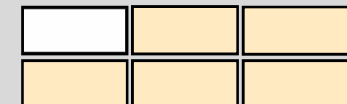
PROPERTIES :

- Polymer-modified, fine-grained cement mortar
- Smooth final surface
- Special, timeless appearance
- Abrasion resistance
- Water repellency
- Very good bonding to the substrate

CONSUMPTION: ~1.4 kg/ m²/mm

PACKAGING: 25 kg

COLORS: White, grey, light grey, light ochre, mocha, crocus



Effects: handmade-looking, innovative solutions

- Tint the mixture with colored pigments (colorants) or
- Add colored pigments on the surface of the fresh microcement coating
Process them the way you prefer and create custom spaces



ISOMAT DECO COLOR



Pigments in powder form

FIELDS OF APPLICATION:

- May be added to any type of mortar, in order to color them
- Suitable for interior and exterior use

PROPERTIES:

- High-quality, inorganic pigments for tinting mortars and concrete
- Ideal for coloring microcement coatings

CONSUMPTION: Depending on the desired color

PACKAGING: 250 g container (5x50 g bags)

COLORS: 10 selected colors (96 recommended hues)

96 προτεινόμενες αποχρώσεις

E2-L1	E1-L1	L1	B1	E1-K2	K1-L1
E4-L1	E1-L2	L2	A1	K2-M1	K4-L1
E5-M1	E1-L4	L3	A2	K1-L4	D1-K2
E6-M3	L4-M1	A1-L4	A4	C1-L4	K4-M1
E1-M2	D1-E4	A2-M1	B1-L1	C1-M1	B4-D1
E1-M4	D1-E2	A4-M1	B2-M1	D1-E1	A1-D2
L1-M4	C1-M2	A4-L1	B4-M1	D2-E1	D4
E1-L4	C1-M4	A4-D1	B4-L1	D4-E1	A1-D4

A: Κεραμίδι, B: Καφεκόκκινο, C: Μαύρο, D: Καφέ σκούρο, E: Ώχρα, F: Πράσινο, G: Μπλε, K: Μωβ, L: Καφέ ανοιχτό, M: Πορτοκαλί

K1	C1-L1	C1	E1-G4	E1-G1	E1
K2	C1-L2	C2	G1	E1-F1	E2
K3	C2-M1	C3	G2	E1-F2	E3
D1-K4	C4-M1	C4	G4	E1-F4	E4
D1	C5-M1	C1-E1	C1-G4	F4	E4-G1
D2	C2-L1	C2-E1	C1-G1	F1	E2-G1
C1-D1	C3-L1	C3-E1	C2-G1	F2	C1-E2
C4-D1	C4-L1	C4-E1	C4-G1	E1-G2	C1-E4

* Οι απογραφές ενδέχεται να έχουν μικρή απόκλιση από το τελικό αποτέλεσμα λόγω εκτύπωσης.

Application of DUROCRET-DECO + DUROCRET-DECO FINISH

- After 24 hours at +23°C, the material has obtained satisfactory initial strength
- A second, thin layer of **DUROCRET-DECO** or **DUROCRET-DECO FINISH** may be applied with a smooth metal trowel in a thickness of 1-2 mm



Smart tip:

Use polystyrene panels to
avoid injuring the surface !!!

Application of DUROCRET-DECO + DUROCRET-DECO FINISH

1st Way of treating the final surface - with pressure:

- The material starts to harden superficially, usually after:
 - ✓ 1.5 h at +10°C
 - ✓ 1 h at +20°C
 - ✓ 0.5 h at +30°C
- The surface is smoothed with a smooth, metal trowel

2nd Way of treating the final surface - by sanding:

- The material has obtained satisfactory initial strength after 24 h
- The surface is smoothed with an orbital sander or a Flex sander



ISOMAT ACRYL DECO

Decorative coating for floors and walls

FIELDS OF APPLICATION:

- As a decorative coating on floors, walls, stairs, etc.
- Suitable for interior and exterior use

PROPERTIES:

- High abrasion and mechanical resistance
- Smooth final result
- Great flexibility, ideal for applications that require high elasticity

CONSUMPTION: ~1.7 kg/m²/mm

PACKAGING: 15 kg and 5 kg containers

COLORS: White and 260 selected colors (ISOMAT COLOR SYSTEM)

ADIFLEX-B



Elastifying agent

FIELDS OF APPLICATION:

- Used for multiple improvement of cement mortars, plasters and special mortars
- Ideal for forming an adhesive layer between the old and new concrete or mortar

PROPERTIES:

- Increases adhesion to the substrate
- Offers elasticity
- Reinforces water impermeability
- Improves resistance to abrasion, chemical effects and oil products
- Waterproofs the cement mortars
- Enhances plasticity and workability of mixtures

CONSUMPTION: 5-10 kg

PACKAGING: 20 kg, 10 kg, 5 kg, 1 kg

COLOR: White



VARNISH-PU 2K GLOSS & MAT

Two-component, transparent, aliphatic, polyurethane varnish

FIELDS OF APPLICATION:

- For waterproofing and protecting microcement coatings, concrete, natural stone, wood, metal surfaces and epoxy paints

PROPERTIES:

- Resistant to UV radiation and weather conditions (rain, frost)
- Resistant to cleaning agents, oils, sea water, alkalis
- Water vapor permeable
- The final surface can be exposed to light vehicle traffic

CONSUMPTION: 0.1-0.2 kg/m²

PACKAGING: 5 kg, 1 kg

COLOR: Transparent



VS-W

Acrylic, water-based varnish

FIELDS OF APPLICATION:

- Suitable for application on cementitious surfaces
- Used as a primer, thinned 1:1 with water, for the application of microcement, before VARNISH-PU 2K
- Used in interior and exterior spaces

PROPERTIES:

- Transparent
- Of nano-molecular structure
- Brightens up the natural color of the material

CONSUMPTION: 150-200 ml/m² per layer

PACKAGING: 20 l, 5 l, 1 l

COLOR: transparent

VARNISH-PU 2KW



Two-component, transparent, water-based, polyurethane varnish

FIELDS OF APPLICATION:

- For waterproofing and protecting microcement coatings, concrete, natural stone, wood and epoxy paints

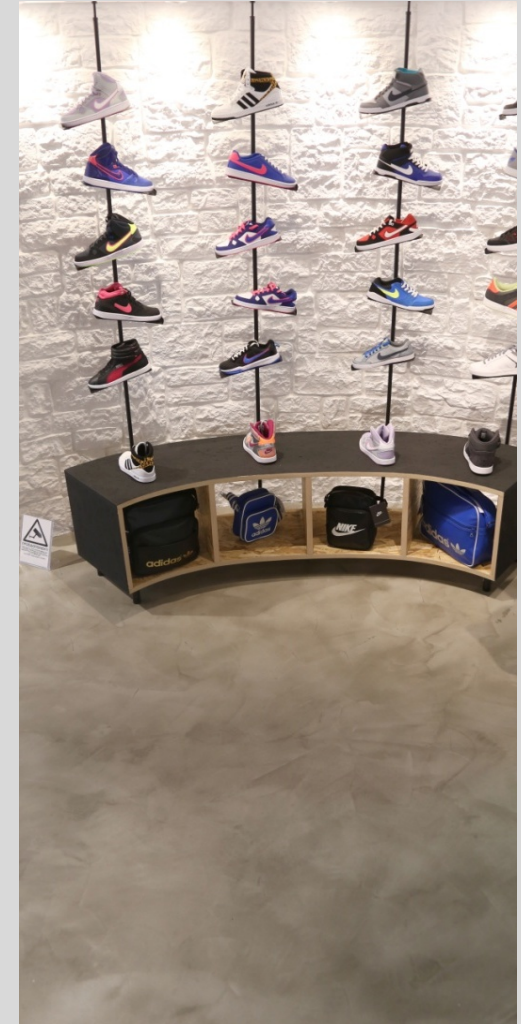
PROPERTIES:

- Odorless, thus enables application in interior spaces
- Resistant to UV radiation and weather conditions (rain, frost)
- Resistant to cleaning agents, oils, sea water, alkalis
- Water vapor permeable
- The final surface can be exposed to light vehicle traffic

Application of VARNISH-PU 2K GLOSS & MAT with and without VS-W



APPLICATION EXAMPLES



■ **Microcement**
Application examples



■ **Microcement**
Application examples



Microcement
Application examples



■ **Microcement**
Application examples



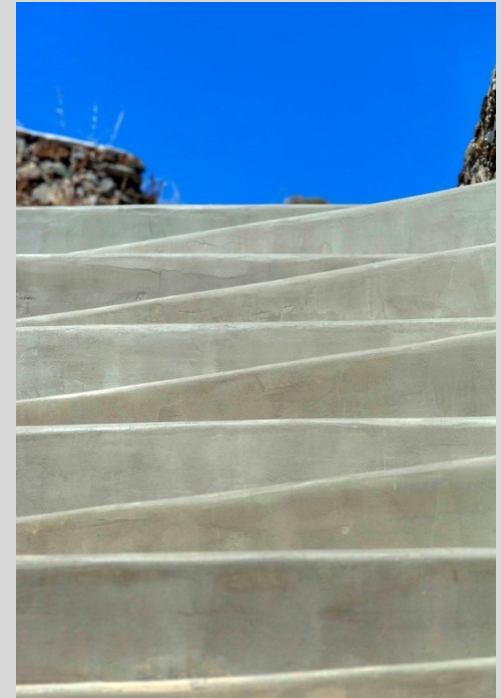
Microcement
Application examples



Microcement
Application examples



Microcement
Application examples



**Thank you for
your
attention!**